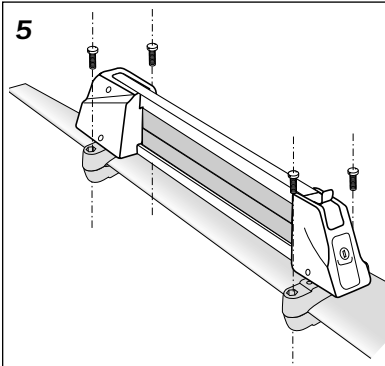
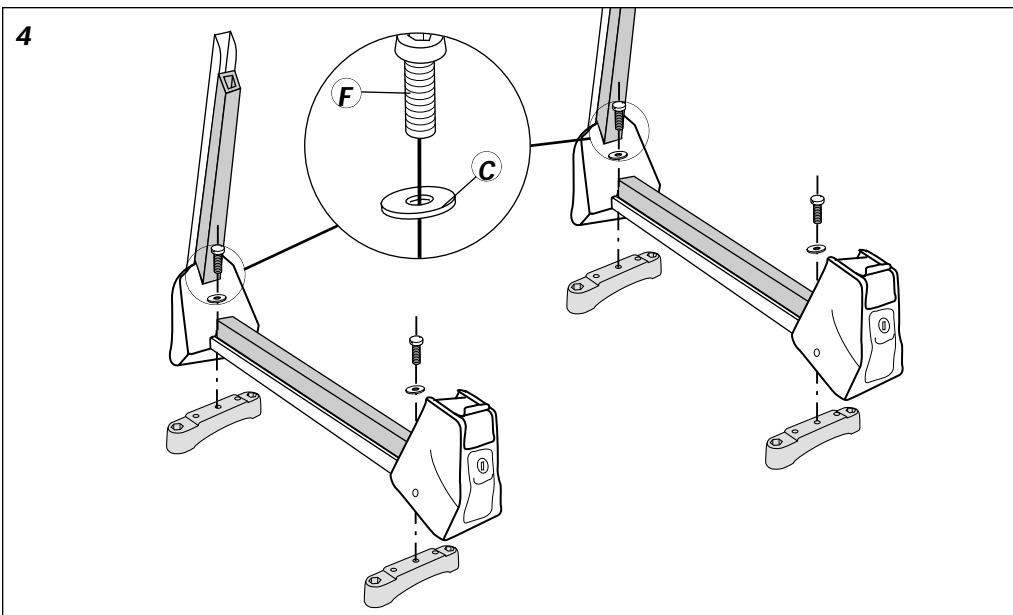
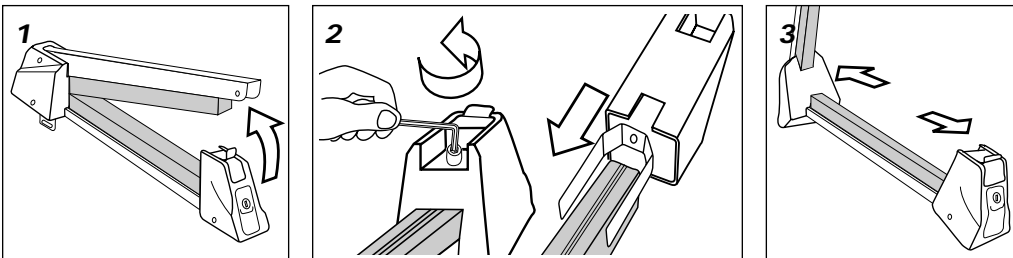


Mise en place d'un porte-skis 3 ou 5 paires - Fitment of a 3 or 5 pairs ski carrier  
 Montage der Skiträger für 3 oder 5 Paar Ski - Colocación de un porta-skis para 3 o 5 pares  
 Installazione di un portasci 3 o 5 paia - Instalação dum porta esquis 3 ou 5 pares  
 Aanbrengen van skihouder 3 of 5 paar



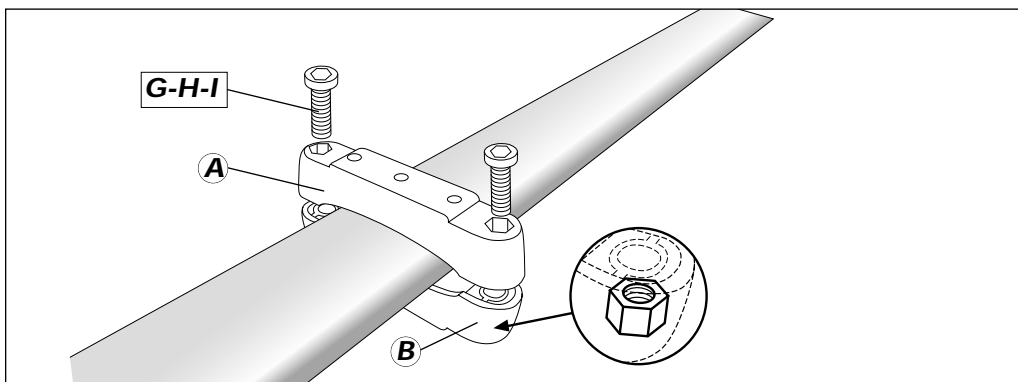
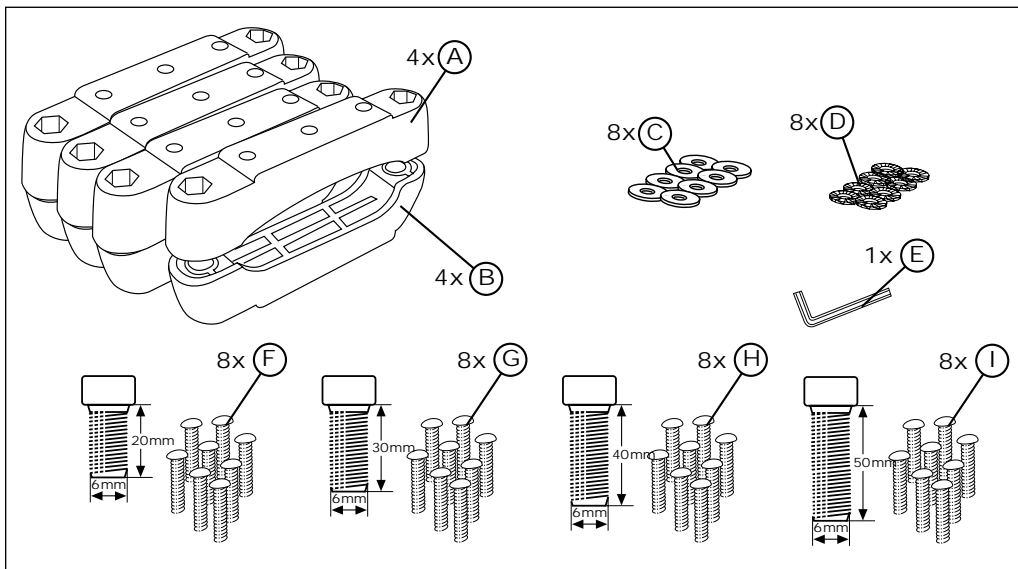
Vérifier que le positionnement et la fixation de l'ensemble soient corrects.  
 Check all fittings are secure.  
 Kontrollieren Sie den Skiträger auf richtige und sichere Montage.  
 Verificare la buona posion e la buona colocación del conjunto.  
 Controllare regolarmente il buon posizionamento e la buona stabilita dell'insieme.  
 Verificar o correcto posicionamento e a boa montagem do conjunto.  
 Controleer de juiste montage en passing.

Ref. Imp. 055 525 24/04/02 logo A4/R/V



ADAPTATEUR  
 UNIVERSAL  
 TESTEATUN





**FRANÇAIS**   **ENGLISH**   **DEUTSCH**   **ESPAÑOL**   **ITALIANO**   **PORTUGUES**   **NEDERLANDS**

Conserver  
la boîte  
pour le  
rangement  
de vos  
adaptateurs

Keep the  
packaging  
for storage  
of your  
adaptors

Werfen  
Sie die  
Verpackung  
des Kits nicht  
weg, damit  
Sie darin die  
Adapter bei  
nichtgebrauch  
aufbewahren  
können

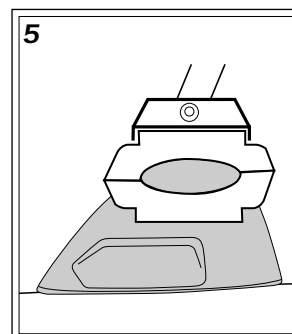
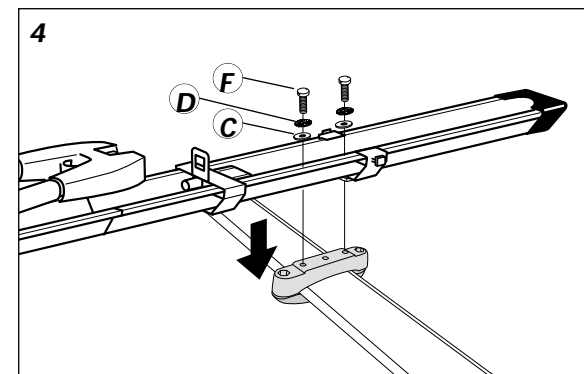
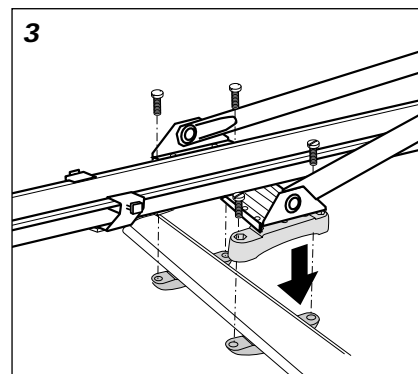
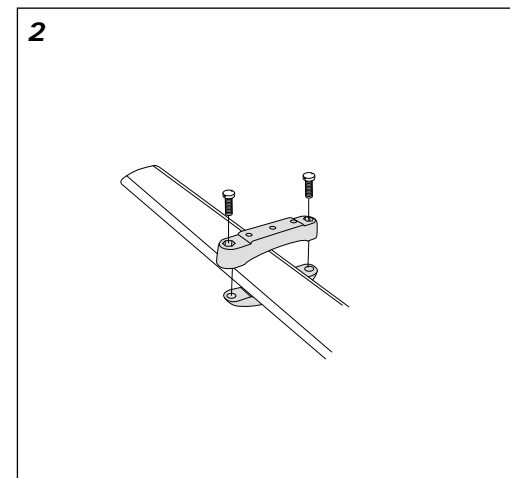
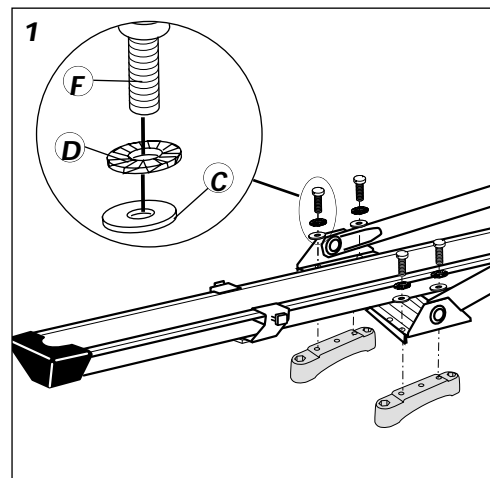
Conservar la  
caja para  
poder  
guardar sus  
adaptadores

Conservare  
l'imballaggi  
o per  
riordinare i  
vostri  
adattatori

Conserve a  
caixa para  
guardar os  
seus  
adaptadores

Bewaar de  
verpakking  
voor het  
opbergen  
van uw  
adapters

**Mise en place d'un porte-vélos - Fitment of a cycle carrier - Montage des Fahrradträgers  
Colocación de un porta-bicicletas - Installazione di un portabicicletta  
Instalação dum porta bicicletas - Aanbrengen van een fietsdrager**



Vérifier que le positionnement et la fixation de l'ensemble soient corrects.  
Check all fittings are secure.  
Kontrollieren Sie den Fahrradträger auf richtige und sichere Montage.  
Verificare la buona posizión y la buona colocación del conjunto.  
Controllare regolarmente il buon posizionamento e la buona stabilità dell'insieme.  
Verificar o correcto posicionamento e a boa montagem do conjunto.  
Controleer de juiste montage en passing.